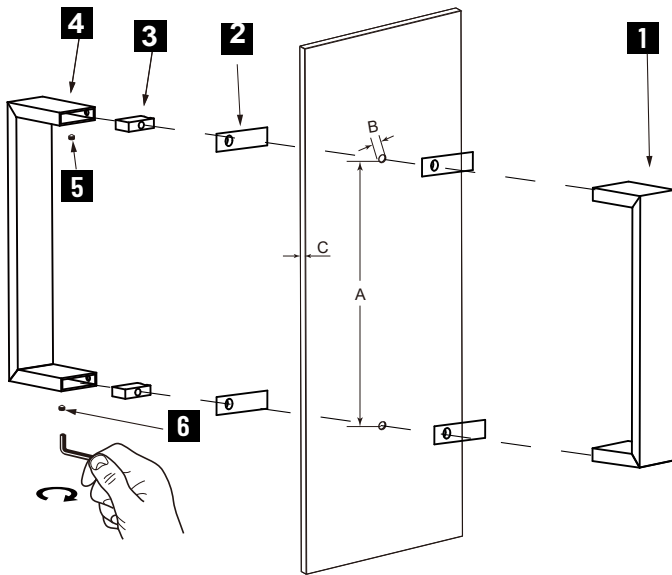


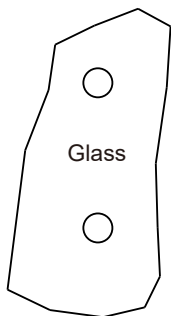
## HAMBURG COLLECTION DOUBLE SHOWER DOOR HANDLE

4407806/7808/7812/7818/7824

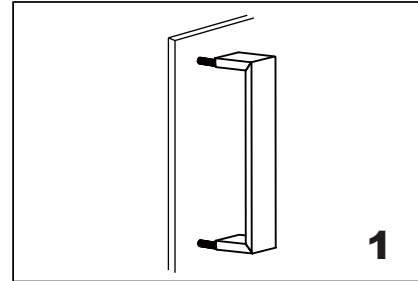


- 1.Handle A
- 2.Clear Gasket x 4
- 3.Fixing Bracket x 2
- 4.Handle B
- 5.Set Screw M5 x 2
- 6.Allen Key 2.5mm x 1

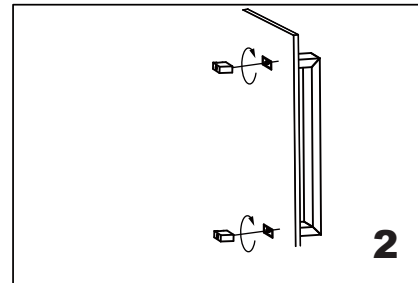
### GLASS INFO



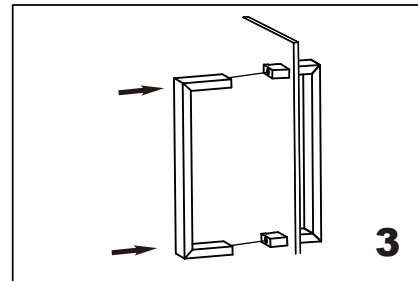
Glass Hole C-C Distance		
A	6"/152mm	6"Shower Door Handle
	8"/203mm	8"Shower Door Handle
	12"/305mm	12"Shower Door Handle
	18"/457mm	18"Shower Door Handle
	24"/610mm	24"Shower Door Handle
B	3/8"(10mm)	Glass Hole Diameter
C	6-12mm	Glass Thickness



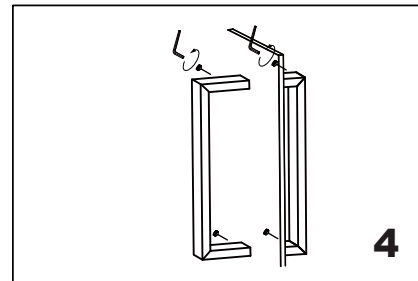
Install the handle A (bolt) through the glass holes,make sure the rubber gaskets are between handle&glass.



Screw in the fixing brackets into the handle bolts.



Add the handle B end caps on the fixing brackets, make sure the set screws holes in the bottom.



Fix the set screws on the end caps,tighten it to avoid loose from fixing brackets.