

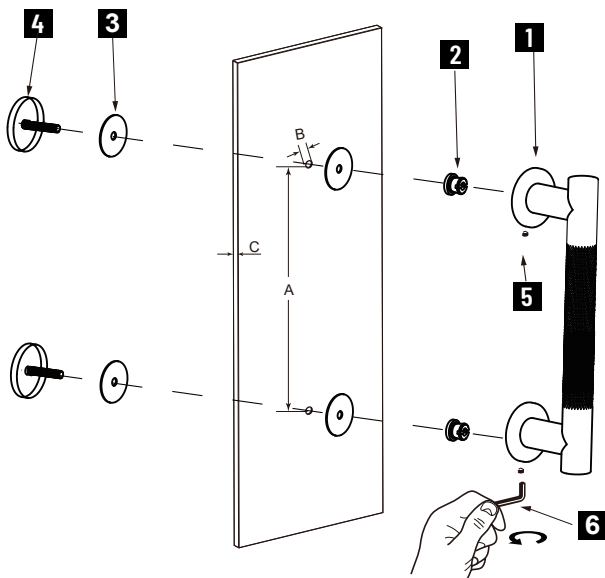
CIRCO KNURLED COLLECTION SINGLE SHOWER DOOR HANDLE

8" 3667508

12" 3667512

18" 3667518

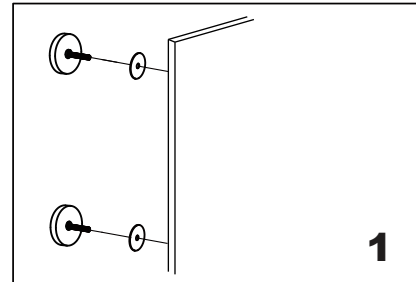
24" 3667524



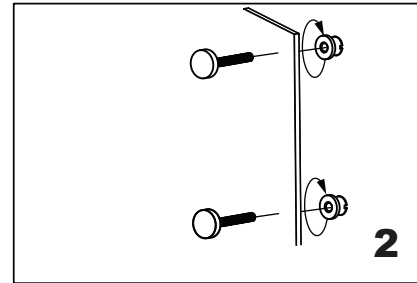
- 1.Handle A
- 2.Fixing Bracket x 2
- 3.Clear Gasket x 4
- 4.End Cap
- 5.Set Screw M5 x 2
- 6.Allen Key 2.5mm x 1

GLASS INFO

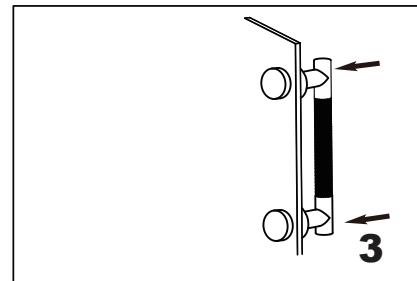
Glass Hole C-C Distance		
A	6"/152mm	6" Shower Door Handle
	8"/203mm	8" Shower Door Handle
	12"/305mm	12" Shower Door Handle
	18"/457mm	18" Shower Door Handle
	24"/610mm	24" Shower Door Handle
B	1/2"(12mm)	Glass Hole Diameter
C	6-12mm	Glass Thickness



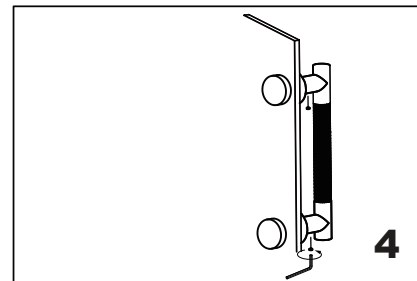
Install the end cap "4" (bolt) through the glass holes, make sure the rubber gaskets are between handle & glass.



Screw in the fixing brackets into the bolts.



Add the handle (1) onto the fixing brackets, make sure the set screws holes in the bottom.



Fix the set screws on the handle, tighten it to avoid loose from fixing brackets.