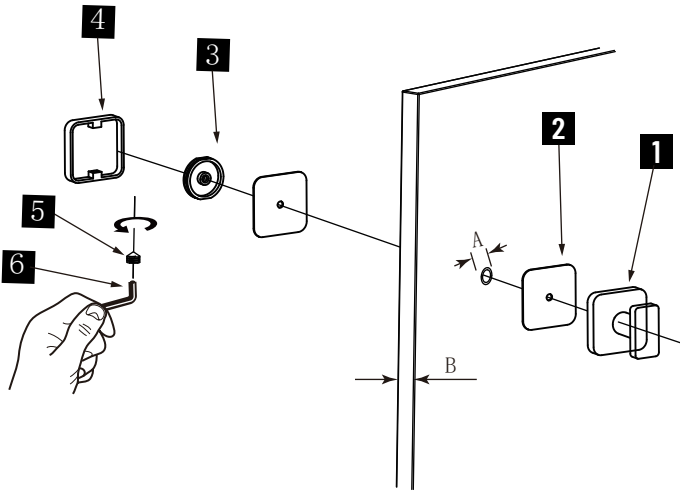


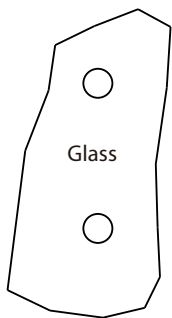
MILAN COLLECTION

SINGLE SDH KNOB

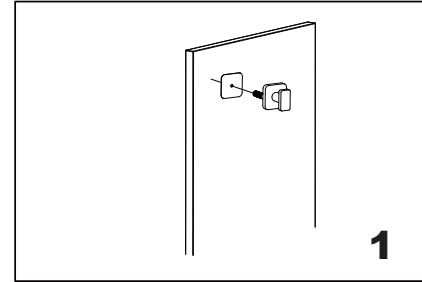
2547501



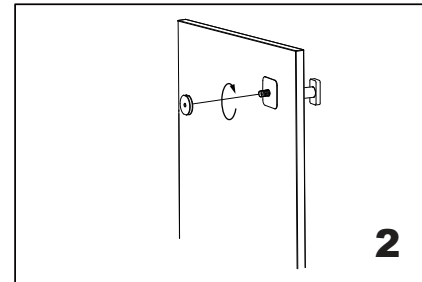
- 1.Knob x 1
- 2.Clear Gasket x 2
- 3.Fixing Bracket x 1
- 4.End Cap x 1
- 5.Set Screw M5 x 1
- 6.Allen Key 2.5mm x 1



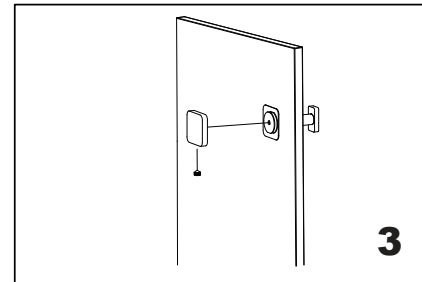
GLASS INFO		
A	1/2"(12mm)	Glass Hole Diameter
B	6-12mm	Glass Thickness



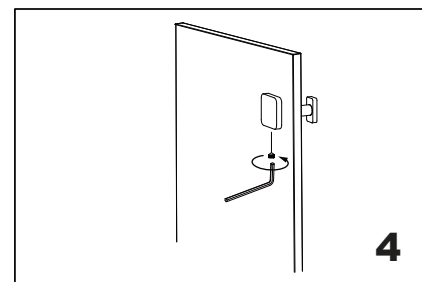
1
Install the knob (bolt) through the glass hole, make sure the rubber gaskets are between knob&glass.



2
Screw in the fixing bracket into the knob bolt.



3
Add the end cap on the fixing bracket,make sure the set screw hole in the bottom.



4
Fix the set screw on the end cap,tighten it to avoid loose from fixing brackets.