

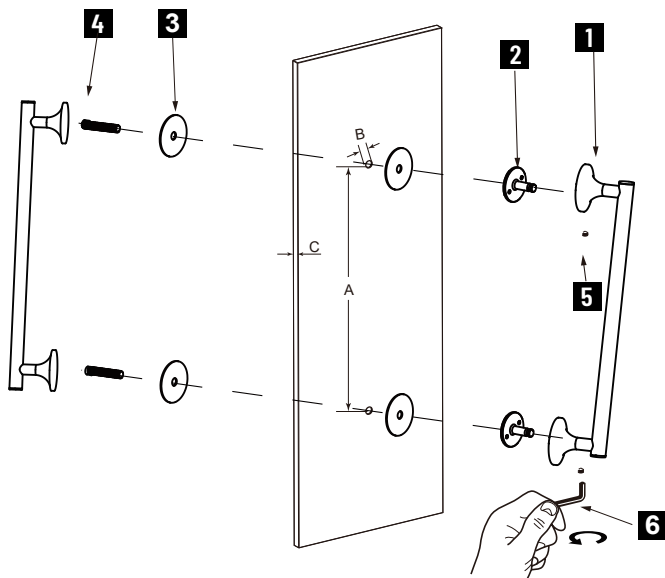
PARIS COLLECTION

DOUBLE SHOWER DOOR HANDLE

12" 1307812

18" 1307818

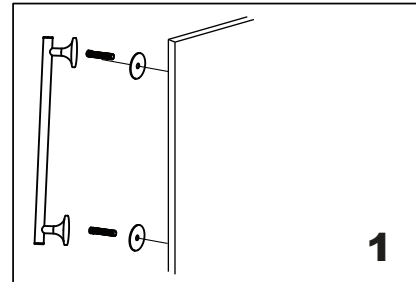
24" 1307824



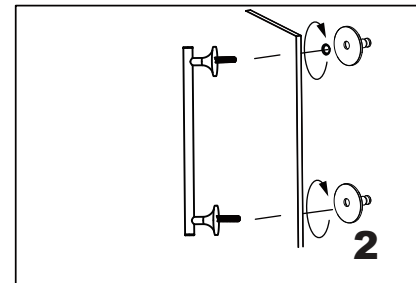
- 1.Handle A
- 2.Fixing Bracket x 2
- 3.Clear Gasket x 4
- 4.End Cap
- 5.Set Screw M5 x 2
- 6.Allen Key 2.5mm x 1

GLASS INFO

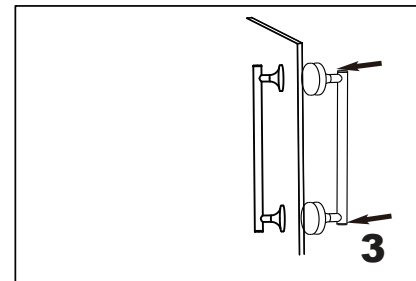
Glass Hole C-C Distance		
A	6"/152mm	6" Shower Door Handle
	8"/203mm	8" Shower Door Handle
	12"/305mm	12" Shower Door Handle
	18"/457mm	18" Shower Door Handle
	24"/610mm	24" Shower Door Handle
B	1/2"(12mm)	Glass Hole Diameter
C	6-12mm	Glass Thickness



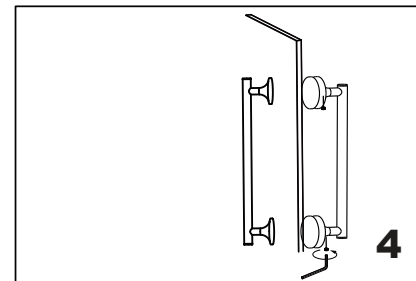
Install the end cap "4" (bolt) through the glass holes, make sure the rubber gaskets are between handle & glass.



Screw in the fixing brackets into the bolts.



Add the handle handle A onto the fixing brackets, make sure the set screws holes in the bottom.



Fix the set screws on the handle, tighten it to avoid loose from fixing brackets.